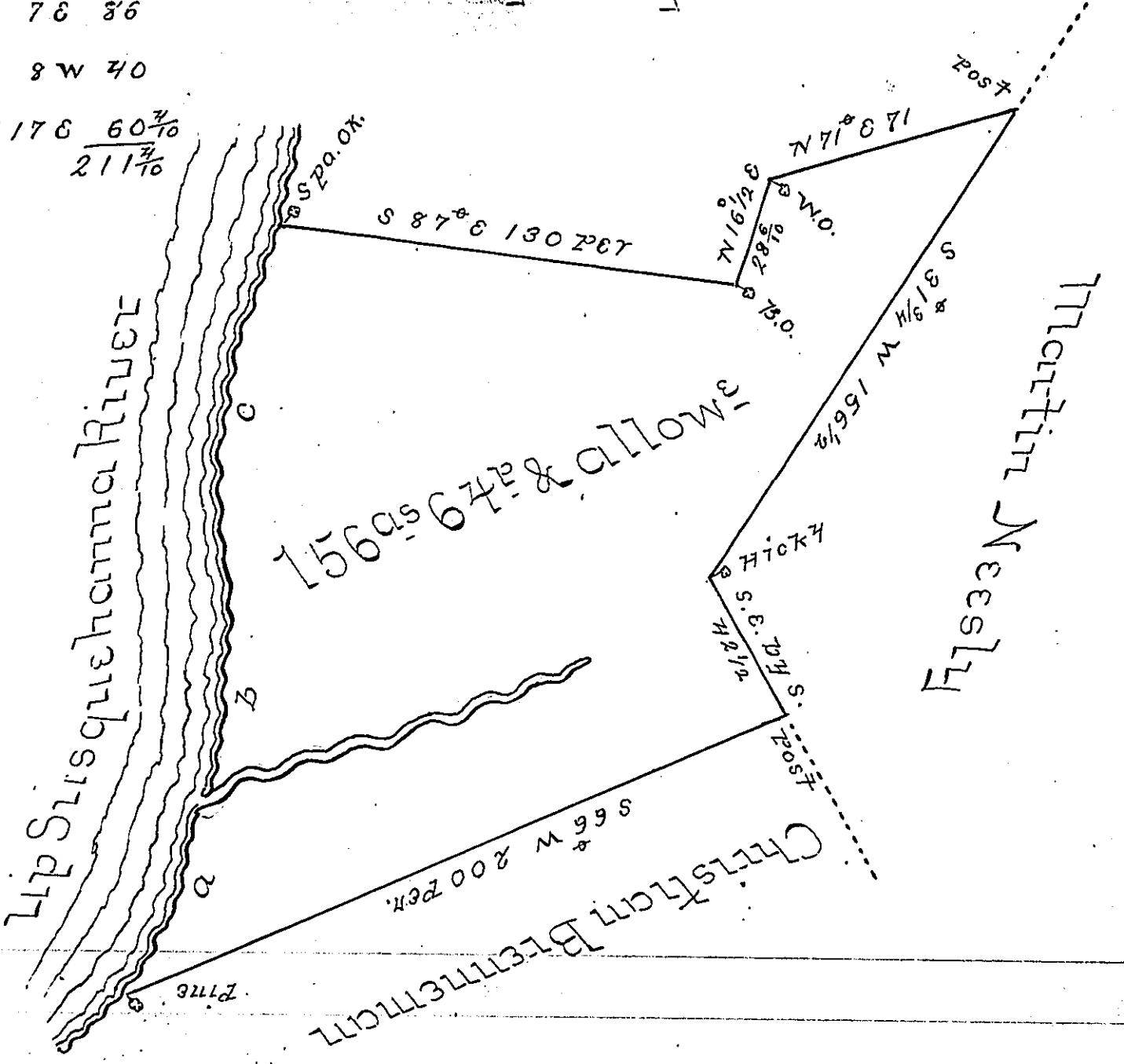


RIVER COURSES

- pine - a N 30 E 25²
- a - b N 7 E 86
- b - c N 8 W 40
- c - sp. o.k. N 17 E $\frac{60\frac{3}{10}}{211\frac{3}{10}}$

Hugh Boyle



Divided off on the 17th day of May 1808 the above described tract containing one hundred & fifty six acres & sixty four perches & allow - Situate in Derry Township Dauphin (late Lancaster) County being part of a larger tract of 252 a 64 & allow granted to Hugh Boyle by Warrant of the first day of March 1742

Saml Cochran Esq - }
 Surveyor Genl of Penna } Genl Hollingsworth U.S.

IN TESTIMONY that the above is a copy of the original remaining on file in the Department of Internal Affairs of Pennsylvania, made conformably to an Act of Assembly approved the 16th day of February, 1833, I have hereunto set my Hand and caused the Seal of said Department to be affixed at Harrisburg, this first day of December 1903.

[Signature]
 Secretary of Internal Affairs.